

Horn Creek Hemp

Sample Sour CBG

Strain

0.00%	0.44%	16.27%
$\Delta 9$ THC	Total CBD	Total Cannabinoids
Not tested	Pass	162.7
Water Activity	Moisture	mg / g Total Cannabinoids



Sample ID

21111630714

Matrix

Flower

Metric

Harvest/Prod Date

Report Created

11/13/2021

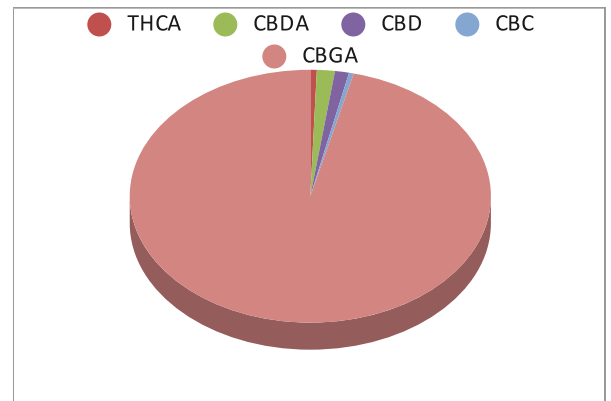
Results Valid Until

11/13/2022

Sample Extracted
11/10/2021 14:31


Sample Analyzed
11/11/2021 10:19

Cannabinoids	%Weight	mg/ gram	LOQ(% /w)
$\Delta 9$ THC	0.00	0.0	0.05
THCA	0.09	0.9	0.05
Total THC ($_{THCA} \times 0.877$)+ $\Delta 9$ THC	0.08	0.8	0.05
CBDA	0.26	2.6	0.05
CBD	0.20	2.0	0.05
CBN	0.00	0.0	0.05
‡ $\Delta 8$ THC	0.00	0.0	0.05
‡ CBC	0.07	0.7	0.05
‡ CBGA	15.64	156.4	0.05
‡ CBG	0.00	0.0	0.05
‡ CBDV	0.00	0.0	0.05
‡ CBDVA	0.00	0.0	0.05
‡ THCVA	0.00	0.0	0.05

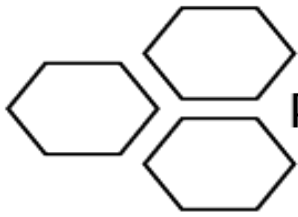


Total THC and Total CBD are calculated values per OAR 333-064-0100. Cannabinoid values for plant matter samples are reported on a dry weight basis. Water activity action level is 0.65Aw. LOQ= Limit of Quantitation. NR=Not Reported 0.00 = Not Detected above LOQ

Rogue Research Lab LLC
218 E. Main Street, Rogue River, OR 97537
Tel. 541-582-1962
ORELAP 4107 OLCC 101050708B
rogue-research-lab.com


Craig Berry - Lab Director
11/13/21

Results pertain to submitted samples only. Rogue Research Lab LLC makes no claims as to the consumer safety or other risks associated with any detected or non-detected amounts of any pesticides, solvents or other adulterants. This report shall not be reproduced, unless in its entirety, without written approval from Rogue Research Lab LLC. Samples were received in good condition and all QC samples met acceptance criteria of the method; data available upon request. Analytes accompanied by dagger (‡) are not within the scope of accreditation and are for informational purposes only.



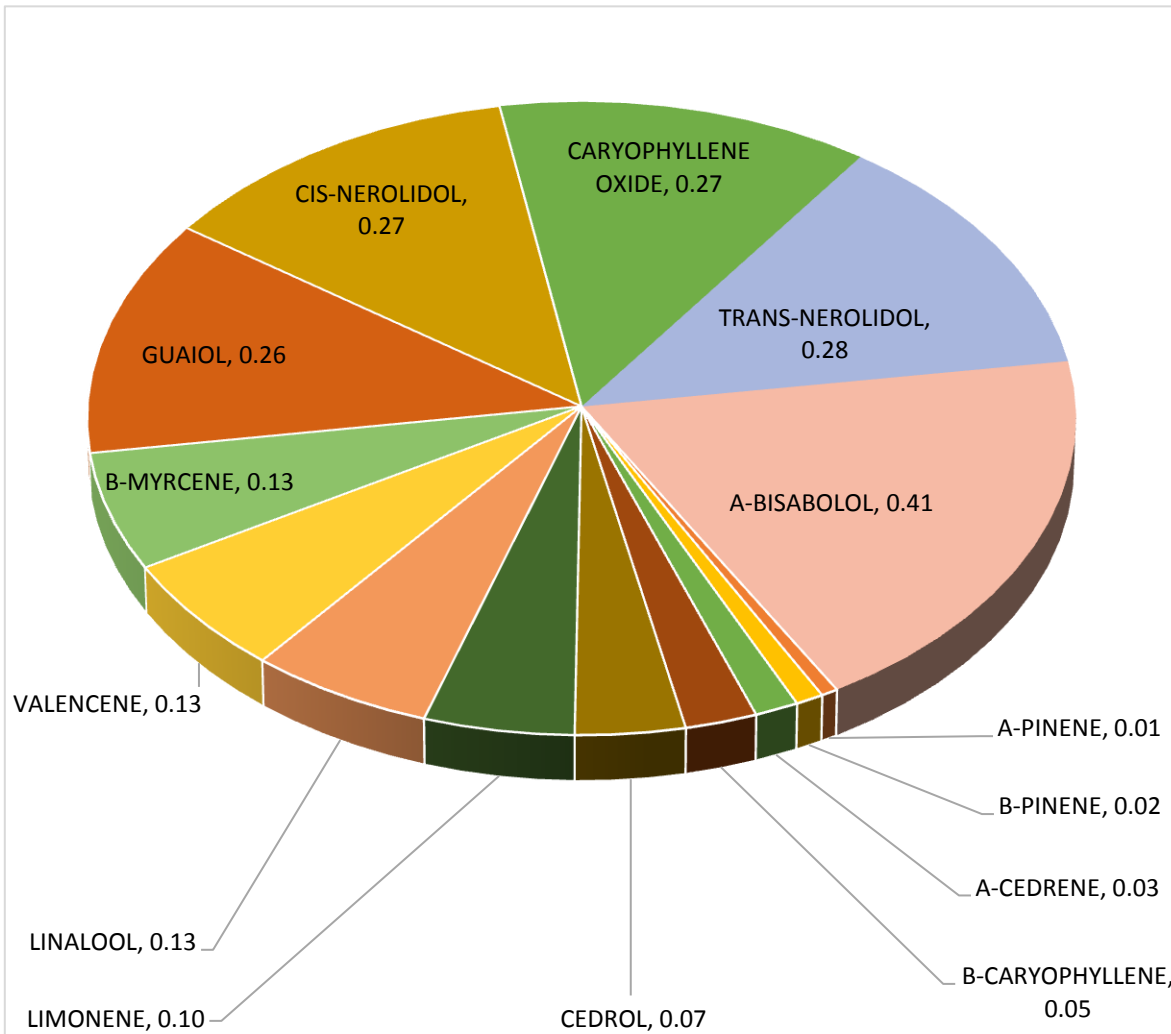
Terpene Analysis

Customer Horn Creek Hemp

Sample Name Sour CBG

File Name 21111630714
Date/Time Extracted: 11/10/2021 14:31
Date/Time Analyzed: 11/11/2021 12:18
Analysis Method/SOP: LO 001R7/I52121R

TESTED FOR : A-BISABOLOL, A-CEDRENE, A-HUMULENE, A-PHELLANDRENE, A-PINENE, A-TERPINENE, B-CARYOPHYLLENE, B-MYRCENE, BORNEOL, B-PINENE, CAMPHENE, CAMPHOR, CARYOPHYLLENE OXIDE, CEDROL, CIS-NEROLIDOL, D-CARENE, DL-MENTHOL, EUCALYPTOL, FARNESENE, R&L FENCHONE, FENCHYL ALCOHOL, GERANIOL, GERANYL ACETATE, G-TERPINENE, GUAIOL, ISOBORNEOL, ISOPULEGOL, LIMONENE, LINALOOL, NEROL, OCIMENE, P-CYMENE, PULEGONE, SABINENE, TERPINEOL, TERPINOLENE, TRANS-NEROLIDOL, TRANS-OCIMENE, VALENCENE.



Craig Berry
Craig Berry - Lab Director

11/13/2021

Terpene total w/w%

2.15